

4

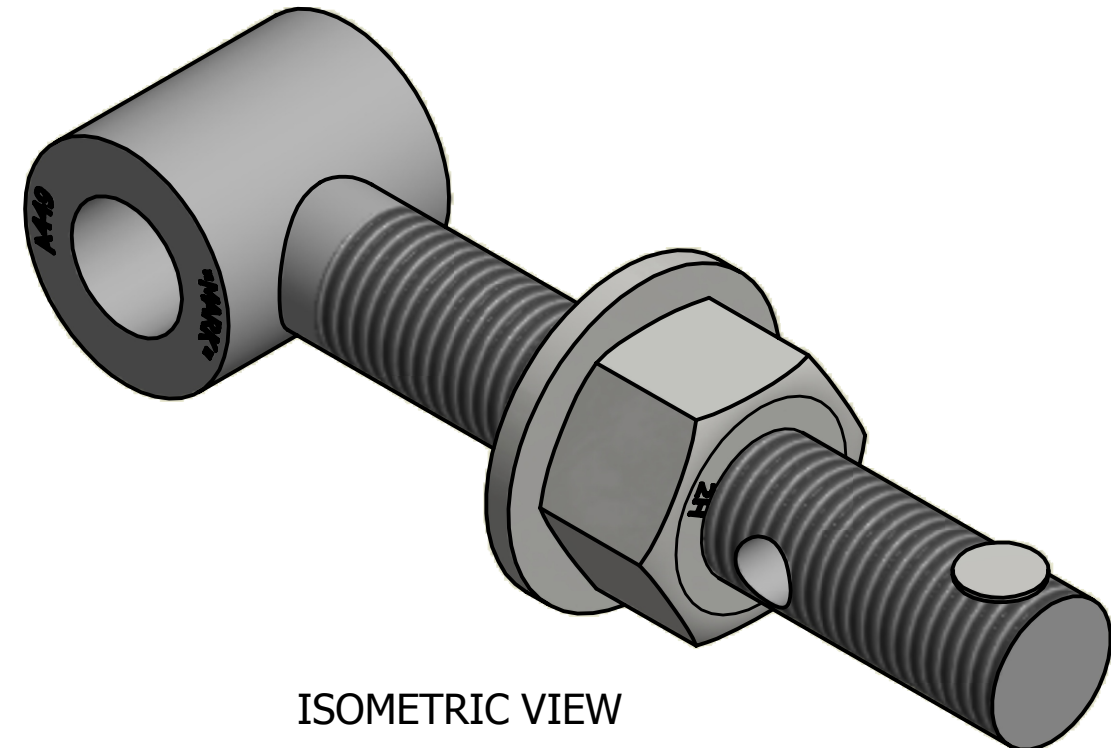
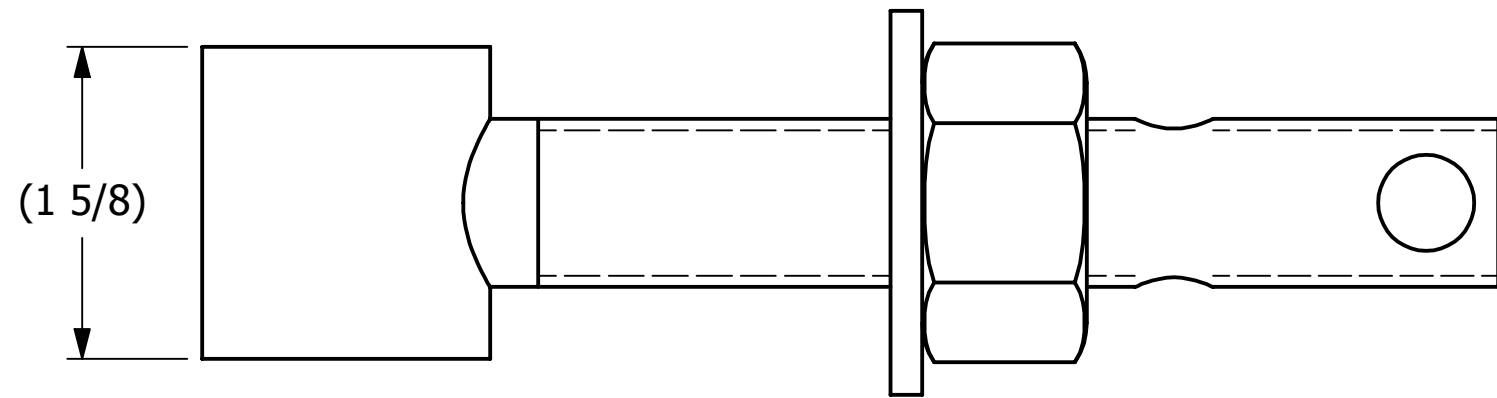
3

2

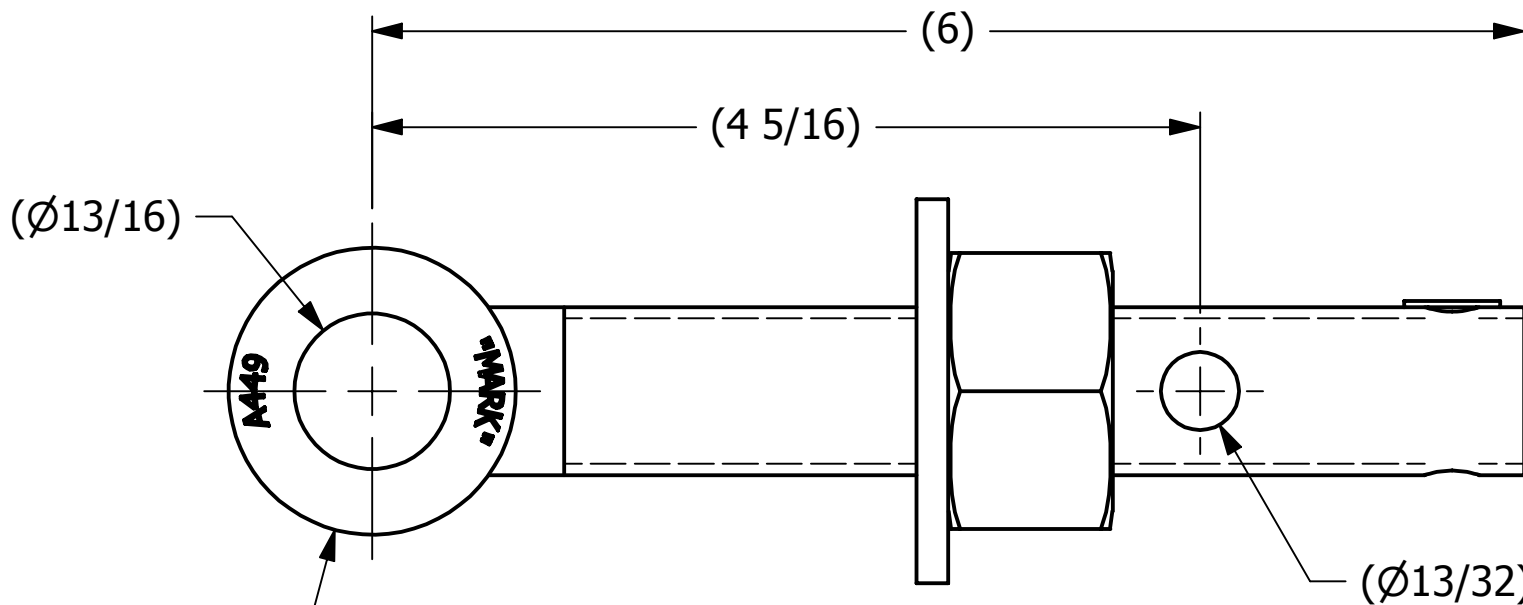
1

B

B



ISOMETRIC VIEW



A

A

SALES DRAWING

SALES DRAWING

NOTE:
BOLT STRENGTH EQUIVALENT TO SAE J429 GRADE 5.

REV	BY	DATE	DESCRIPTION
C	RJP	11-9-15	UPDATED TO CURRENT STANDARDS
B	AJB	5-5-06	CHANGED MATERIAL SPEC
A	CHL	10-7-05	NEW PART ADDED TO SYSTEM

<small>UNLESS OTHERWISE SPECIFIED DIMENSIONAL TOLERANCES</small> FRACTIONAL: ±1/16 X.XX: ±.03 X.XXX: ±.015 ANGULAR: ±1° <small>DEBURR ALL SHARP EDGES. ALL MACHINED SURFACES TO HAVE A 125 RMS FINISH UNLESS NOTED OTHERWISE.</small> THIRD ANGLE PROJECTION	DRAWN BY:	CHL
	CHECKED BY:	ACC
	PROTOTYPE BY:	CHL
	PROTOTYPE DATE:	5/31/2005
	APPROVED FOR PRODUCTION BY:	ACC
	PRODUCTION DATE:	10/7/2005

SALCO PRODUCTS, INC.		
PART NAME: EYEBOLT ASSEMBLY 7/8"X6"		
MATERIAL: CARBON STEEL, ASTM A449 TYPE 1		
PROJECT #: WAG0245	SHEET #: 1 OF 1	SCALE: 1:1
DRAWING #: B20650	PART #: EB786XTHAG5	

THIS PRINT, PROPERTY OF SALCO PRODUCTS INC., CONTAINS PROPRIETARY INFORMATION AND MUST NOT BE COPIED, REPRODUCED, OR USED DETRIMENTALLY TO OUR INTEREST.

4

3

2

1

A

A